

ADAM-5013 ADAM-5017 ADAM-5017P

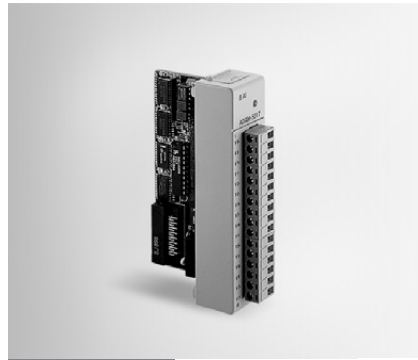
3-ch RTD Input Module

8-ch Analog Input Module

8-ch Analog Input Module with Independent Input Range



ADAM-5013



ADAM-5017



ADAM-5017P



Specifications

General

- **Certification** CE
- **Connectors** 1 x Plug-in screw terminal (# 14 ~ 22 AWG)
- **Enclosure** ABS+PC
- **Power Consumption** 1.1 W (max.)

RTD Input

- **Accuracy** $\pm 0.1\%$ or better
- **Bandwidth** 13.1 Hz @ 50 Hz
15.72 Hz @ 60 Hz
- **Channels** 3
- **CMR @ 50/60 Hz** 150 dB
- **Input Connections** 2, 3 or 4 wire
- **Input Impedance** 2 M Ω
- **Input Type** PT100 or Ni RTD
- **NMR @ 50/60 Hz** 100 dB
- **Resolution** 16-bit
- **RTD Types and Temperature Ranges**

IEC RTD 100 ohms			
Pt	-100°C	to	+100°C
a=			0.00385
Pt	0°C	to	+100°C
a=			0.00385
Pt	0°C	to	+200°C
a=			0.00385
Pt	0°C	to	+600°C
a=			0.00385
JIS RTD 100 ohms			
Pt	-100°C	to	+100°C
a=			0.00392
Pt	0°C	to	+100°C
a=			0.00392
Pt	0°C	to	+200°C
a=			0.00392
Pt	0°C	to	+600°C
a=			0.00392
Ni RTD			
Ni	-80°C	to	+100°C
Ni	0°C	to	+100°C
- **Sampling Rate** 10 samples/sec. (total)
- **Span Drift** $\pm 0.01^\circ\text{C}/^\circ\text{C}$
- **Zero Drift** $\pm 0.015^\circ\text{C}/^\circ\text{C}$

Protection

- **Isolation Voltage** 3000 V_{DC}

Ordering Information

- **ADAM-5013** 3-ch RTD Input Module

Specifications

General

- **Certification** CE, FM
- **Connectors** 1 x Plug-in screw terminal (# 14 ~ 22 AWG)
- **Enclosure** ABS+PC
- **Power Consumption** 1.25 W (max.)

Analog Input

- **Accuracy** Voltage mode: $\pm 0.1\%$ or better
Current mode: $\pm 0.2\%$ or better
- **Bandwidth** 13.1 Hz @ 50 Hz
15.72 Hz @ 60 Hz
- **Channels** 8 differential
- **CMR @ 50/60 Hz** 92 dB min.
- **Input Impedance** Voltage: 2 M Ω
Current: 120 Ω (Build-in 120 Ω resistor for Current input)
- **Input Range** ± 150 mV, ± 500 mV, ± 1 V, ± 5 V, ± 10 V; ± 20 mA
- **Resolution** 16-bit
- **Sampling Rate** 10 samples/sec. (total)
- **Span Drift** ± 25 PPM/ $^\circ\text{C}$
- **Zero Drift** ± 6 $\mu\text{V}/^\circ\text{C}$

Protection

- **Isolation Voltage** 3,000 V_{DC}
- **Fault and Overvoltage Protection** Withstands overvoltage up to ± 35 V

Note: The voltage difference between any two pins must not exceed ± 15 V

Ordering Information

- **ADAM-5017** 8-ch Analog Input Module

Specifications

General

- **Certification** CE, FCC Class A
- **Connectors** 1 x Plug-in terminal block (#14 ~ 22 AWG)
- **Enclosure** ABS+PC
- **Power Consumption** 1.25 W (max.)

Analog Input

- **Accuracy** Voltage mode: $\pm 0.1\%$ or better
Current mode: $\pm 0.2\%$ or better
- **Channels** 8 (differential, each channel can be configured with different range)
- **CMR @ 50/60 Hz** 92 dB min.
- **Input Impedance** Voltage: 800K Ω
Current: 120 Ω (Build-in 120 Ω resistor for Current Input) for Current Input)
- **Input Range** 0 ~ 150 mV, 0 ~ 500 mV, 0 ~ 1 V, 0 ~ 5 V, 0 ~ 10 V, 0 ~ 15 V, ± 150 mV, ± 500 mV, ± 1 V, ± 5 V, ± 10 V, ± 15 V, ± 20 mA, 4 ~ 20 mA
- **Resolution** 16-bit
- **Sampling Rate** 10 samples/sec. (total)
- **Span Drift** ± 25 ppm/ $^\circ\text{C}$
- **Zero Drift** ± 6 $\mu\text{V}/^\circ\text{C}$
- **High Common Mode** 200 V_{DC}

Protection

- **Over Voltage Protection**
- **Built-in TVS/ESD Protection**
- **Isolation Voltage** 3,000 V_{DC}

Note: Does not support ADAM-5510KW series

Ordering Information

- **ADAM-5017P** 8-ch Analog Input Module w/ Ind. Input Range