

AMAX-5051

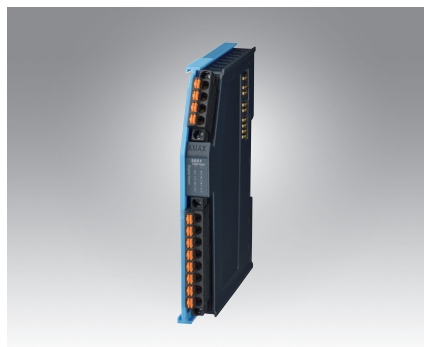
AMAX-5056

AMAX-5056SO

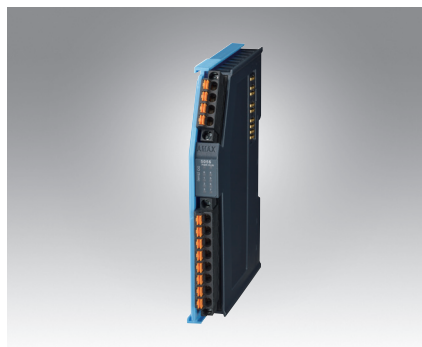
8-ch Digital Input Module

8-ch Sink-type Digital Output Module

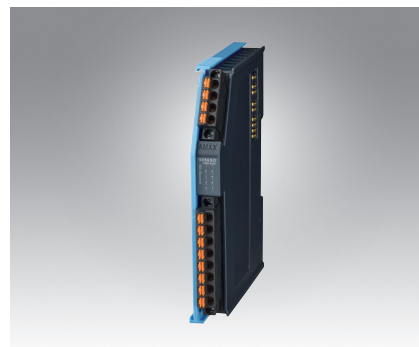
8-ch Source-type Digital Output Module



AMAX-5051



AMAX-5056



AMAX-5056SO



Specifications

General

- **Certification** CE, FCC class A
- **Connector** Pluggable 4P+8P push-in terminal (#24-16 AWG)
- **Enclosure** PC
- **Power Consumption** 2W@24V_{DC}
- **Protocol** EtherCAT
- **Transmission Rate** 100Mbps
- **LED Indicator** PWR, RUN, DI status

Digital Input

- **Channels** 8
- **Digital Input** Dry Contact
Logic level 1: close to Iso.GND
Logic level 0: open
Wet Contact
Rated voltage: 24V_{DC}
Logic level 1: 10-30 V_{DC}
and -10--30 V_{DC}
Logic level 0: -3~3 V_{DC}
- **Input Delay** From logic level 0 to 1: 4ms
From logic level 1 to 0: 4ms
- **Digital Filter** 3ms

Protection

- **Isolation Voltage** 2,000 V_{DC}

Environment

- **Operation Temperature** -25-60°C (vertical mounted)
- **Storage Temperature** -40-85°C
- **Relative Humidity** 95% (non-condense)

Ordering Information

- **AMAX-5051** 8-ch Digital Input Module

Specifications

General

- **Certification** CE, FCC class A
- **Connector** Pluggable 4P+8P push-in terminal (#24-16 AWG)
- **Enclosure** PC
- **Power Consumption** 2W@24V_{DC}
- **Protocol** EtherCAT
- **Transmission Rate** 100Mbps
- **Distributed Clock** Default inactive
- **LED Indicator** PWR, RUN, DO status

Digital Output

- **Channels** 8 (Sink Type)
- **Voltage Rating** 10-30V_{DC}
- **Rated Current Output** 0.3A per channel at signal "1"
- **Leakage Current** 25 μA per channel at signal "0"
- **Output Delay** From logic level 0 to 1: 10μs
From logic level 1 to 0: 100μs

Protection

- **Isolation Voltage** 2,000 V_{DC}
- **Internal Flyback diode for inductive load**

Environment

- **Operation Temperature** -25-60°C (vertical mounted)
- **Storage Temperature** -40-85°C
- **Relative Humidity** 95% (non-condense)

Ordering Information

- **AMAX-5056** 8-ch Sink-type Digital Output Module

Specifications

General

- **Certification** CE, FCC class A
- **Connector** Pluggable 4P+8P push-in terminal (#24-16 AWG)
- **Enclosure** PC
- **Power Consumption** 2W@24V_{DC}
- **Protocol** EtherCAT
- **Transmission Rate** 100Mbps
- **Distributed Clock** Default inactive
- **LED Indicator** PWR, RUN, DO status

Digital Output

- **Channels** 8 (Source Type)
- **Voltage Rating** 10-30V_{DC}
- **Rated Current Output** 0.5A per channel at signal "1"
- **Leakage Current** 10 μA per channel at signal "0"
- **Output Delay** From logic level 0 to 1: 150μs
From logic level 1 to 0: 2ms

Protection

- **Isolation Voltage** 2,000 V_{DC}
- **Internal Flyback diode for inductive load**

Environment

- **Operation Temperature** -25-60°C (vertical mounted)
- **Storage Temperature** -40-85°C
- **Relative Humidity** 95% (non-condense)

Ordering Information

- **AMAX-5056SO** 8-ch Source-type Digital Output Module